

AVIOSYS-IP Power Center

92, 98 series



Installation manual Ver.1.01

Copyright © 2024 Aviosys All rights reserved. No part of this publication may be reproduced, stored in a retrieval system, or transmitted in any form or by any means, electronic, mechanical, photocopying, recording or otherwise, without the prior written consent of us.

All trademarks and products mentioned in this document are the properties of us.

Table of Contents

1. Installation	4
2. How does it work?	5
3. Device's Settings	8
4. IP Power Center(IPC)-92, 98 series basic instructions	12
4-1 IPC-92 series	12
4-2 IPC-98 series	13

IP Power Center is a windows software of managing IP Power device. It can online group monitor and control on/off multiple IP Power devices at the same time.

* IP Power Center only provides on/off function. If you want to use schedule, ping and other settings, still need to enter the web interface for settings.

1. Installation

(1) Access to Aviosys official website → support → download

(2) Search IP Power Center 92 series and 98 series.

Please download based on the device you are using.

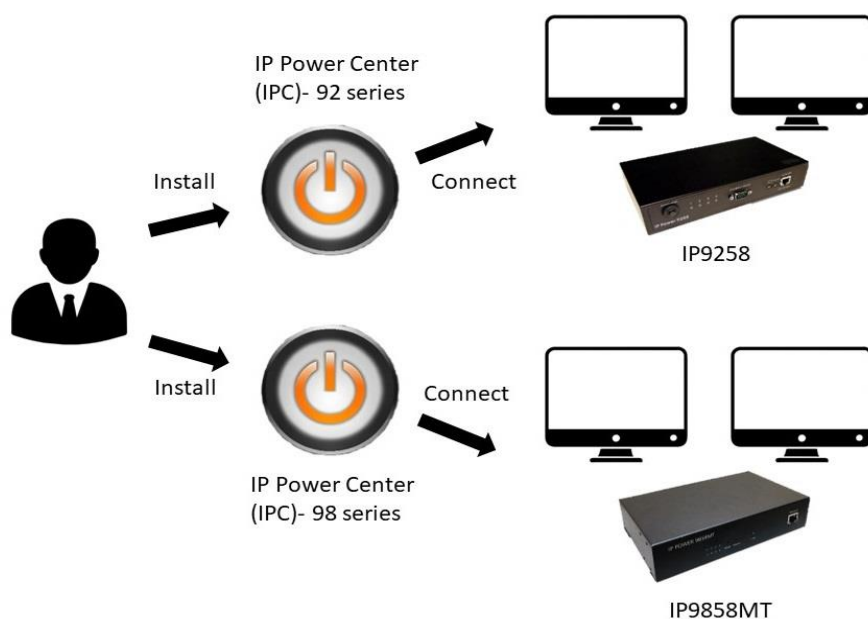
After downloading, please put it on your desktop to unzip the file.

Once unzip the file, click on the installation file.

After installation is complete, you can start using it.

*When you open it, a login screen will appear, click **“Login”** directly, **no need to enter username and password.**

***Notice:** If a notification appears during the installation process or when opening IP Power Center, indicating it has been blocked by firewall settings, please click "Allow." If you do not encounter such notification during the installation process, please refer to P.5.



2. How does it work?

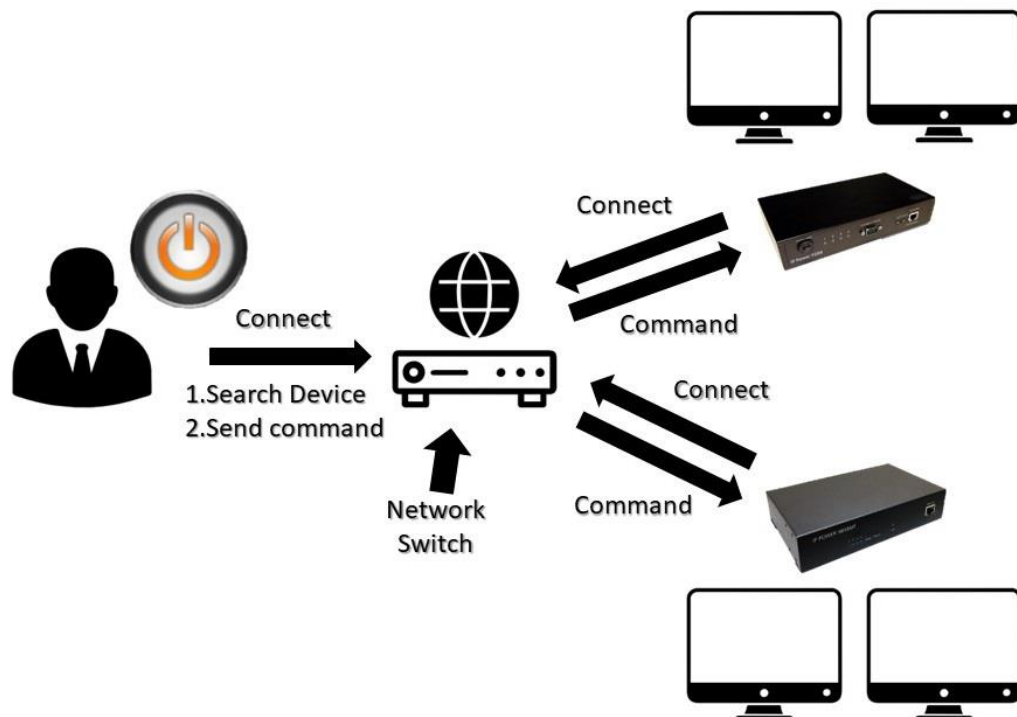
The IP Power Center allows users of IP Power to centrally manage device usage in various locations without requiring users to personally access the network interfaces of each device for switch control.

It can be applied in schools, companies, museums, etc.

What you need to prepare?

- (1) A computer serving as the main controller
(It is recommended to use a computer with stable specifications to avoid accidents. Ex: insufficient memory, crash, etc.)
- (2) A network switch
- (3) Ethernet cables (the quantity depends on the number of IP Power devices)

Example:

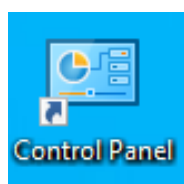


(4) Firewall settings:

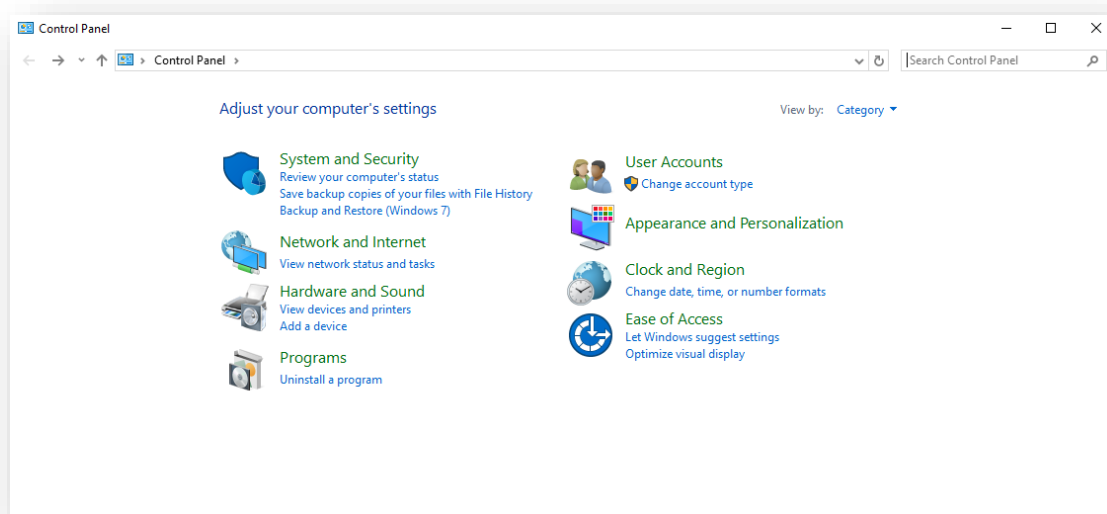
Before opening IP Power Center, please make sure to disable the firewall for the application. If the firewall is not disabled, IP Power devices cannot be searched in IP Power Center.

(4-1) Access to your “Control Panel”, If there is no Control Panel icon on your desktop, you can find it through the Windows search function.

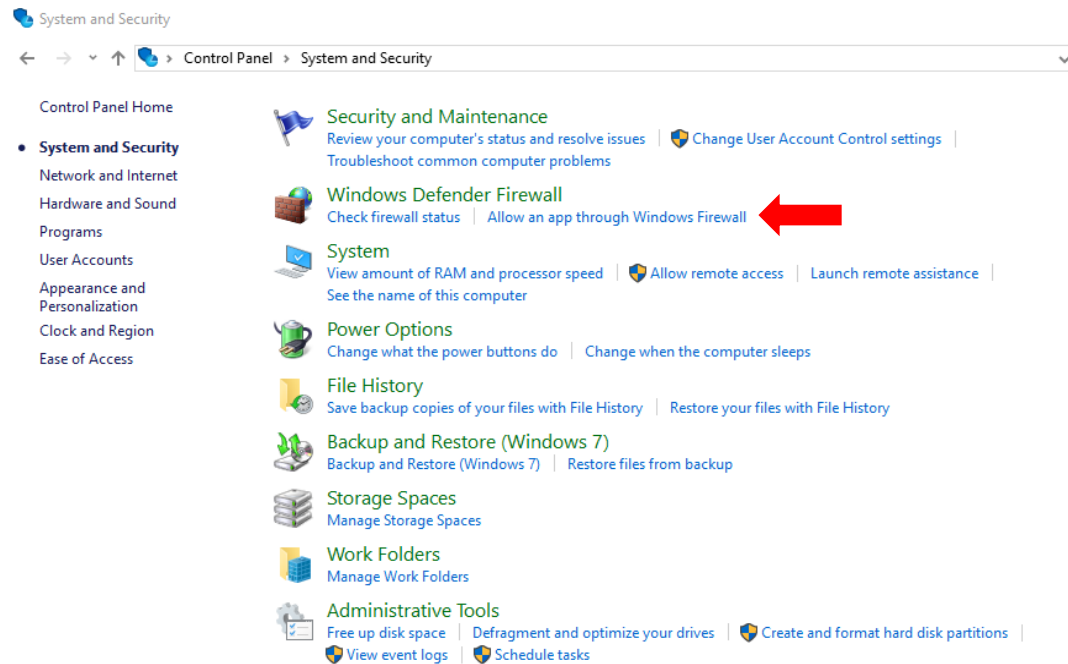
Control Panel icon:



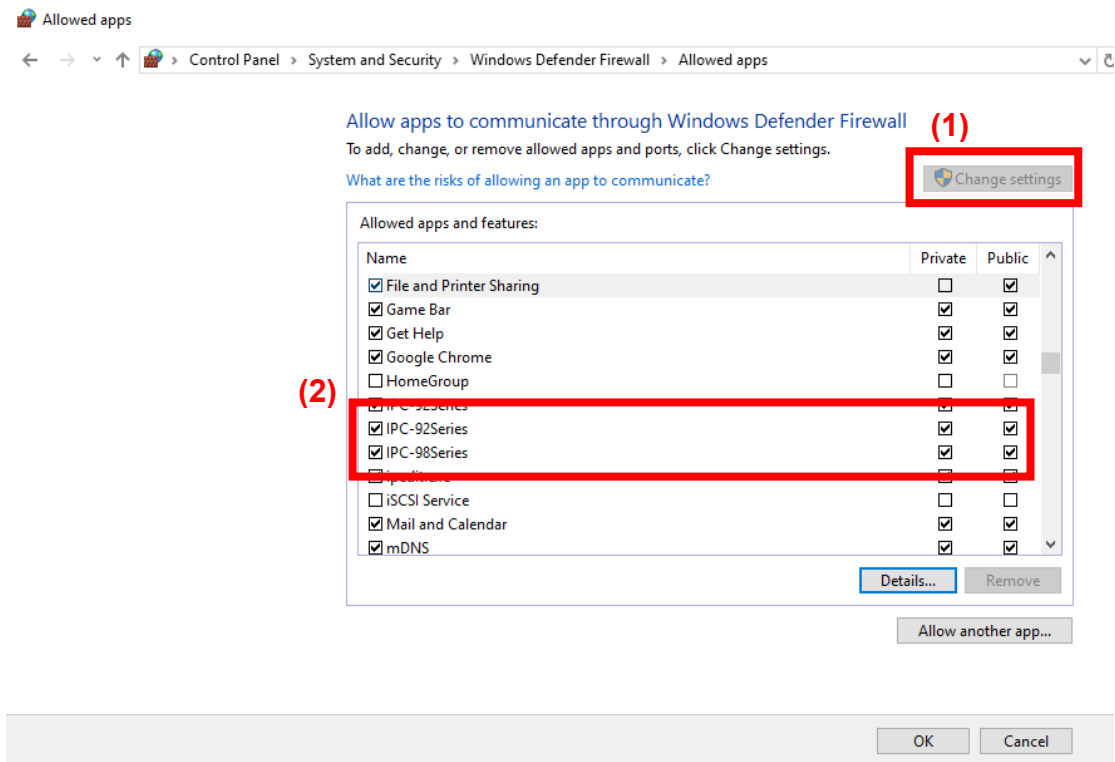
Click into the Control Panel, then click the “System and Security”



(4-2) After entering "System and Security", click on the "Allow an app through Windows Firewall" located under Windows Defender Firewall.



(4-3) When you enter, please follow the red box(1) and click "Change settings" first, look for **IPC-92, 98 series** in the "Allowed apps and features"(as red box(2) shown) and enable both private and public networks, then click OK to confirm.



3. Device's Settings

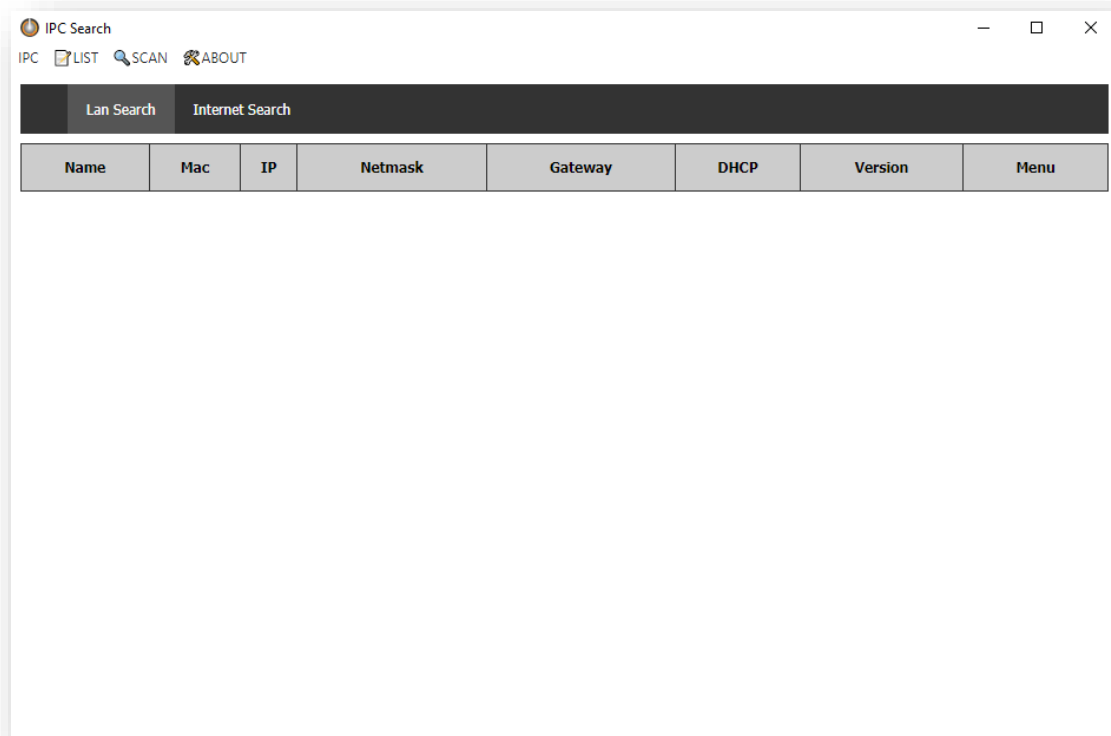
Due to IPC-92 series and 98 series being entirely separate software. When using different IP Power devices, please use them separately according to the model you are using.

Before you open IP Power Center, please close ipedit, if both software are opened simultaneously, IP Power Center will not be able to search for devices.

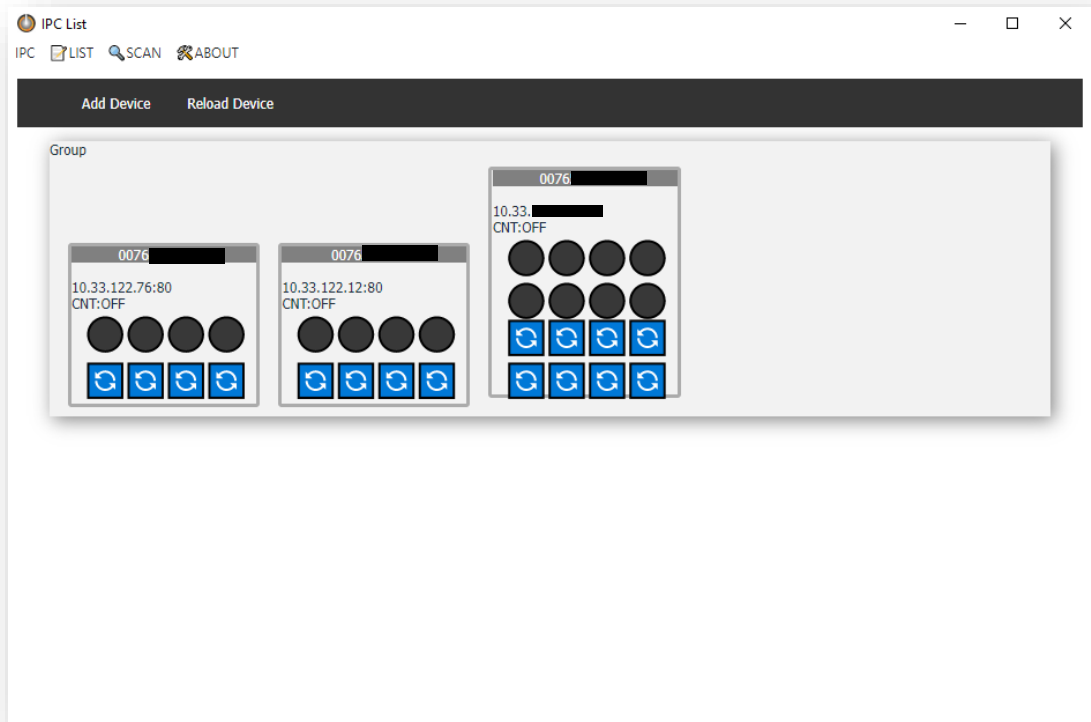


***Reminder:** If there are numerous networks set up in your home or workplace, please ensure that the network connection of the device matches that of the computer installing the IP Power Center.

IP Power Center UI:



List: Add the devices you scanned into your list for manipulation.
You can also group them during the process for control.



Device on/off and invert

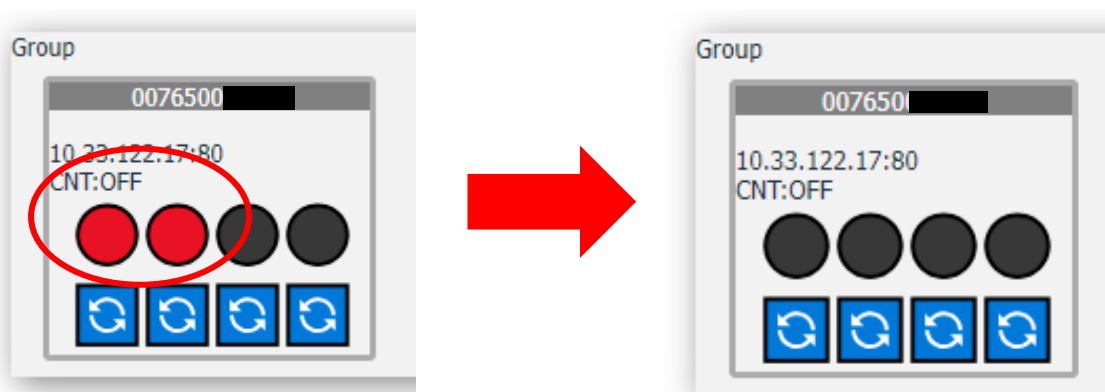
1. Device on/off:

In the list, you can toggle the on/off function by clicking on the black circles. The sequence of Power is counted from left to right.

Take the following picture as an example, the illuminated red lights on the left indicate Power 1 and 2, which are currently in the “on” status.

Clicking on the two red dots within the red circle will switch them back to the “off” status.

Similarly, to activate the power, simply click on any black circle.

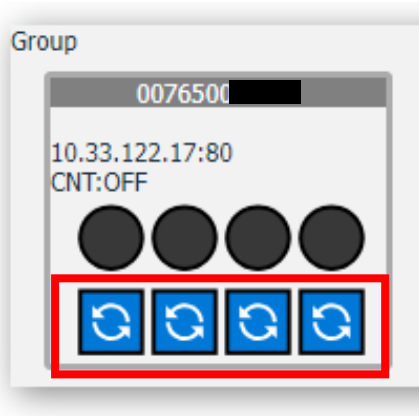


Device invert:

In the red box below the image, there is a blue icon. This is the "invert" function, mainly used for forcing power-off and when there are bugs with the power display.

Ex:(1) Unable to click the power above.

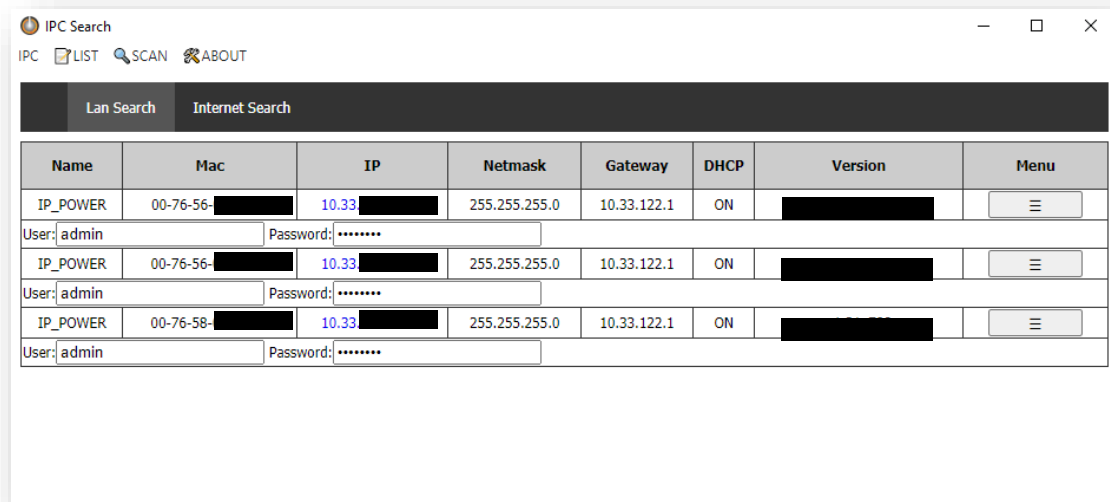
(2) The host power is completely off, but the IP power center light is still on.



Scan:

(1) Lan Search

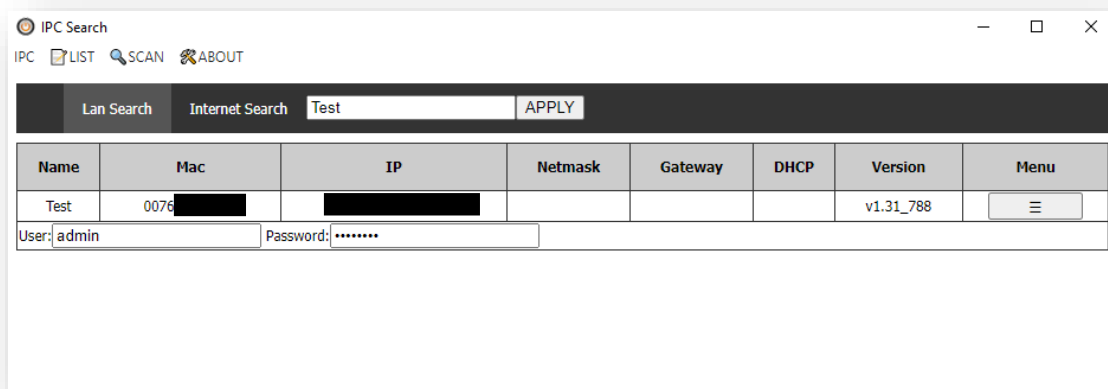
When you click on "Lan Search," it will search for devices connected to your local network on your computer. Please note, if you have more than two networks at home or in your workplace, please ensure that all devices are connected to the same one, otherwise the IP Power Center will not be able to search for all devices.



(2) Internet Search

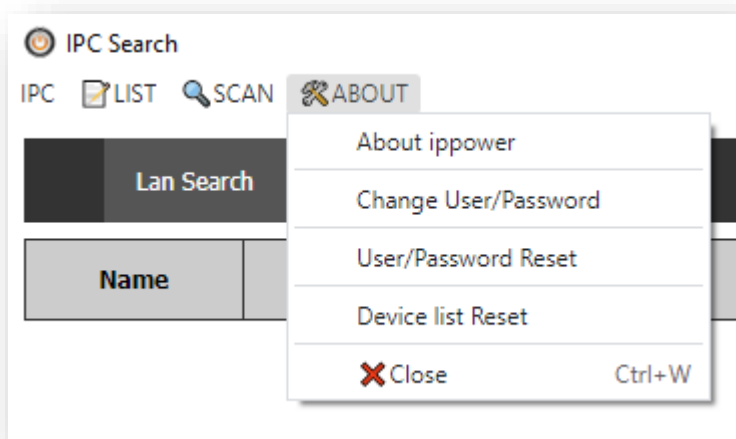
This function is primarily used to search for IP Power devices outside the intranet, allowing remote addition of the devices to one's own computer.

* The prerequisite for using this function is to first access the web UI inside the IP Power device, and then enable the IP service and CNT (MQTT) within one's own IP Power device, so that the IP Power center can search for devices on the intranet network.



About:

It is mainly used for modifying/resetting passwords, and resetting the device list.

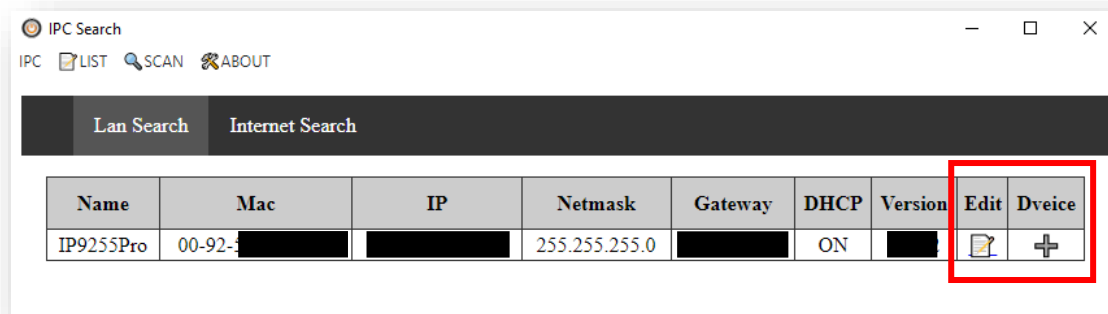


4. IP Power Center(IPC)-92, 98 series basic instructions

***Note:** There are operational differences between IPC-92 series and IPC-98 series. The differences will be introduced to you below.

4-1 IPC-92 series

Click on "Lan Search," and after the device appears, you will see "Edit" and "Device." Click on them to display as shown in the figure below.



Name	Mac	IP	Netmask	Gateway	DHCP	Version	Edit	Dveice
IP9255Pro	00-92-[REDACTED]	[REDACTED]	255.255.255.0	[REDACTED]	ON	[REDACTED]	[Icon]	[+]

Edit Network Settings:

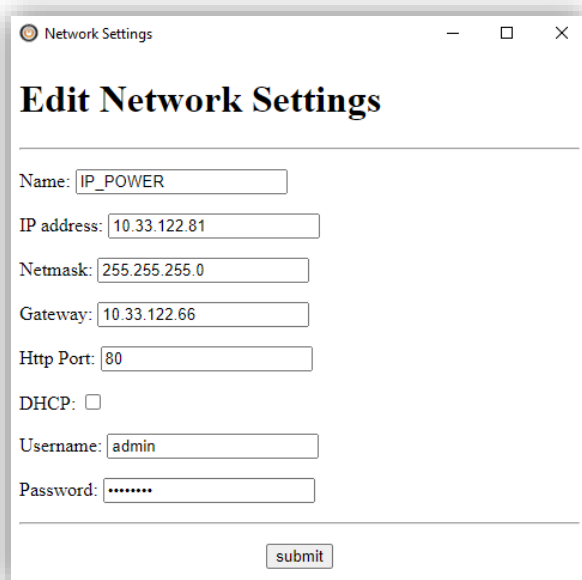
The main settings include three points:

1. Change device IP
2. Enable/ Disable DHCP
3. Change device name and login password

Add Network Settings:(Device)

Basically, there's no need to change other settings. Just adjust two settings according to personal preference:

1. Set up a group
2. Enable CNT (MQTT)



Edit Network Settings

Name:

IP address:

Netmask:

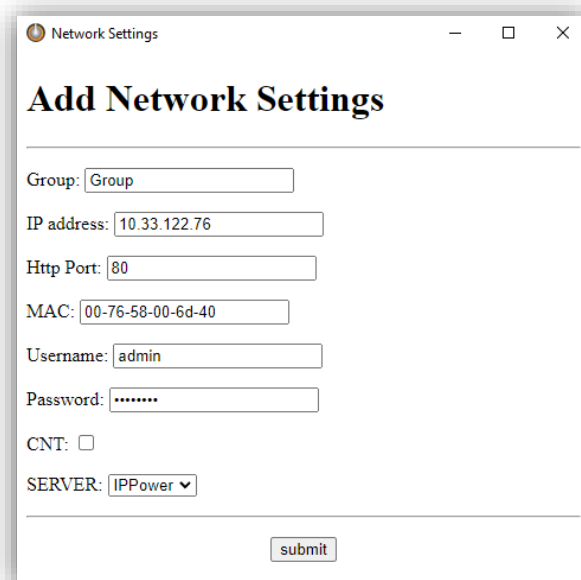
Gateway:

Http Port:

DHCP:

Username:

Password:



Add Network Settings

Group:

IP address:

Http Port:

MAC:

Username:

Password:

CNT:

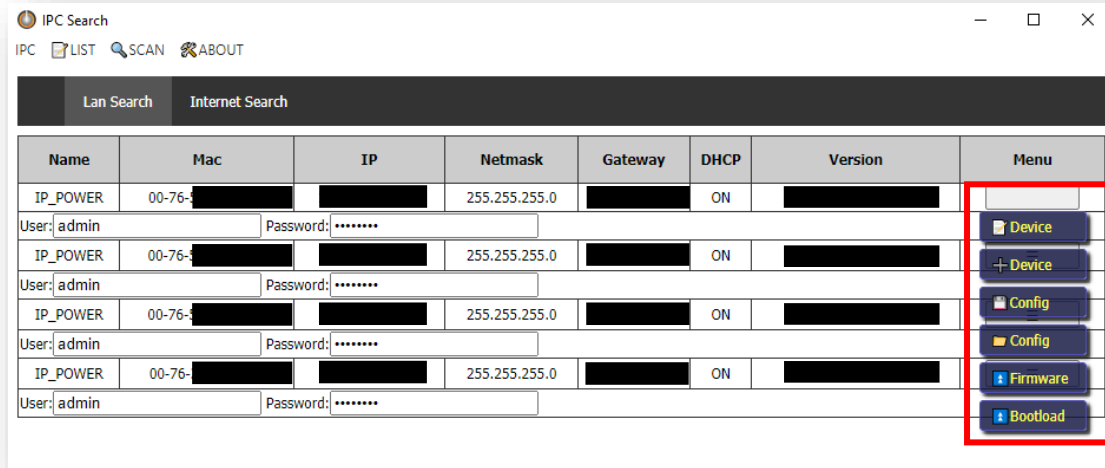
SERVER:

*** Before enabling the CNT function, please move to the IP Power device webpage to activate the IP service and CNT function, and then return to IPC to enable it. Otherwise, the device cannot be controlled remotely.**

4-2 IPC-98 series

Clicking on Lan Search, then clicking on the Menu button on any discovered device, will bring up the options within the red box.

Unlike the IPC-92 series, the 98 series offers more functionalities.



As the device settings are identical to those of the 92 series, we will introduce other features below.

1. Config (Device configuration setting)

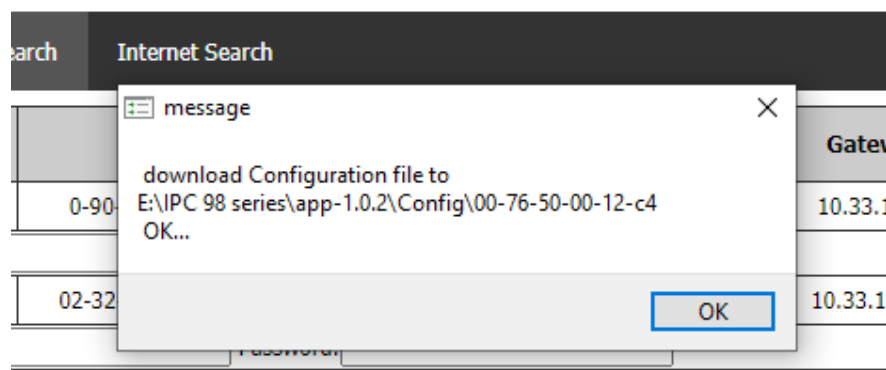
When you click on Config, IPC will save the settings for your device.



If the original settings are lost due to accidents or firmware updates, please click on this icon.



Find the MAC address of your device in the folder, then click on the settings file you config before. After clicking in, a progress bar will appear, and once it complete, your saved settings will be restored.



2. Firmware (divided by hardware and software upgrade)

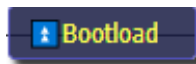
*Notice:

- (1) Please do not use other online software (ex: Line, Skype) during the update process, and do not turn off the device or unplug it to avoid software damage caused by update failure.
- (2) If you have update files for the 98 series devices, please do not use them to update the 9855 series. The software files for the 9855 series are different from those of other 98 series devices.

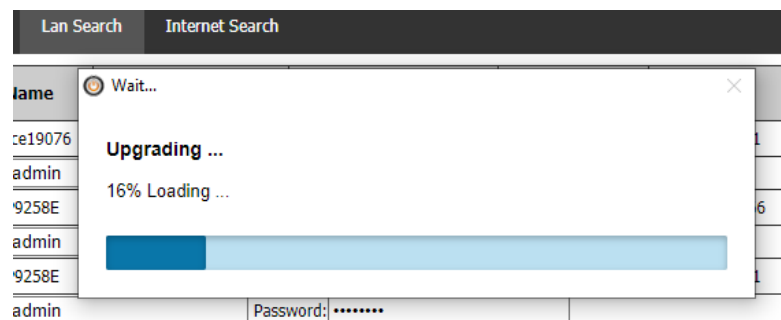
If there is any requirement for update firmware, please contact us:

<https://www.aviosys.com/products/contactus.html>

(2-1) Hardware upgrade(Bootloader):



In all IP Power 98 series devices, updating the Bootloader is a crucial step. Before updating the firmware, please check your Bootloader version, which can be found in the Firmware section of the device's web UI.



If your Bootloader version meets the update requirements, you can proceed to the firmware update below.

(2-2) Software upgrade(Firmware):

Please click on Firmware and select the file you want to update from your folder.



- * Please make sure to update your Bootloader version to the officially recommended version first.